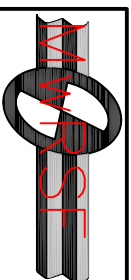


Plan View



Front Elevation

Note: 1) Barriers 5-13 are new Kansas Barriers.
 2) Use minimum 28-day concrete compressive strength of 34 MPa.



Midwest Roadside Safety Facility

NCHRP 22-14(2) Temporary Barrier with Quad-cab Pickup Layout

Drawing Name: 2214TB-2 R2.dwg

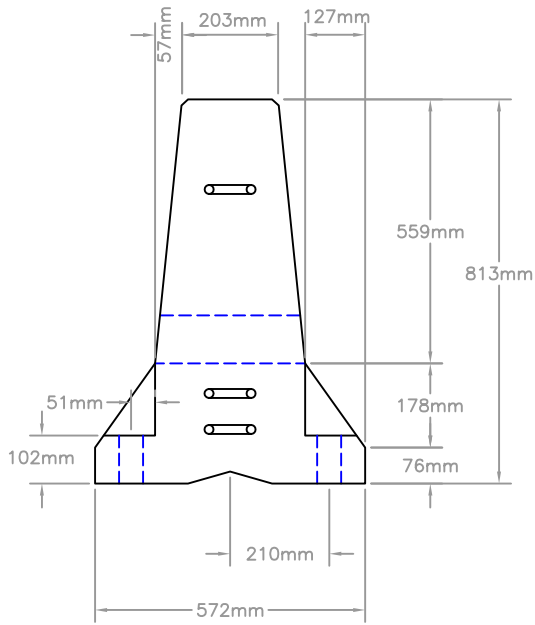
Scale: None

Sheet: 1 of 5

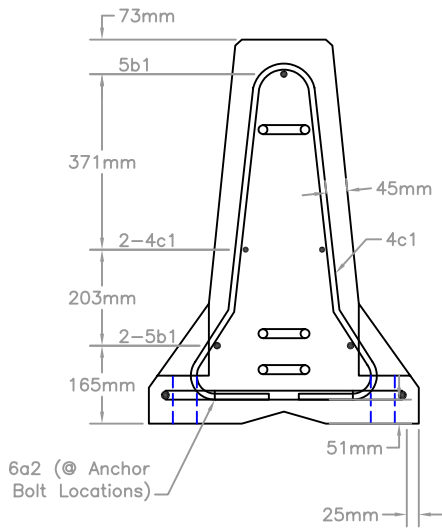
Date: 10/17/2005

By: GEP

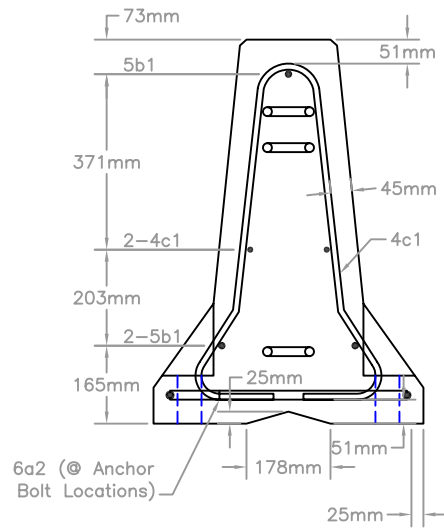
Rev: KAP



End View



Section A-A (Typ.)



Section B-B (Typ.)



**Midwest Roadside
Safety Facility**

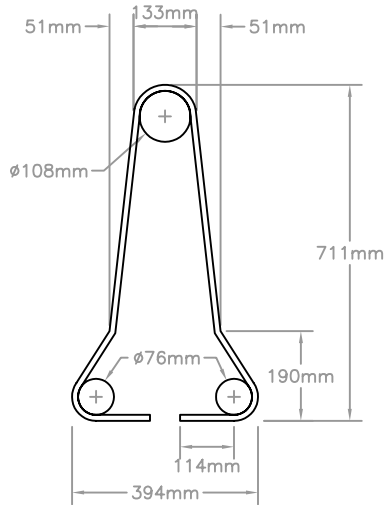
**NCHRP 22-14(2)
Temporary Barrier
with Quad-cab Pickup
Profile and Tie Down Details**

Drawing Name:
2214TB-2 R1.dwg

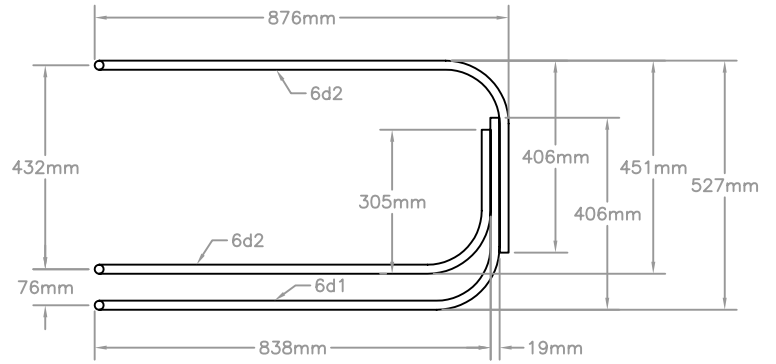
Scale:
1=16

Sheet:
3 of 5
Date:
10/17/2005
By:
GEP
Rev:
KAP

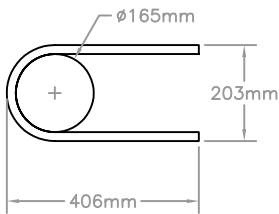
Loop Bar Assembly



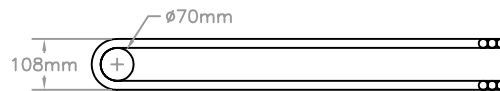
4a1



Elevation View



6a2



Plan View

BILL OF BARS					
Mark	Bar No.	No.	Length	Material	Pin Dia.
4a1	4	12	1829mm	A615 Gr. 60	76&108mm
6a2	6	6	889mm	A615 Gr. 60	165mm
5b1	5	3	3708mm	A615 Gr. 60	
4c1	4	2	3708mm	A615 Gr. 60	
6d1	6	2	2565mm	A706 Gr. 60	
6d2	6	2	2311mm	A706 Gr. 60	
6d3	6	2	2591mm	A706 Gr. 60	



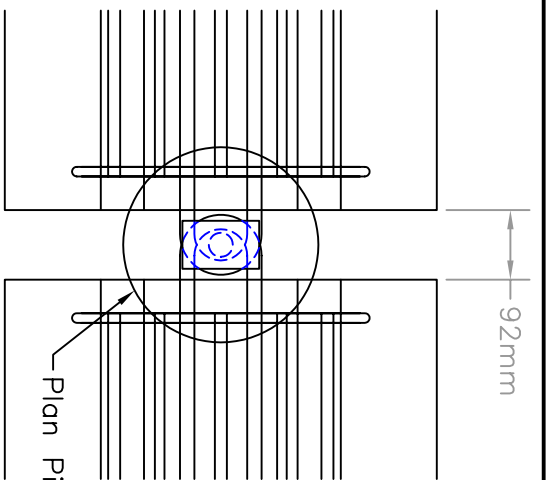
**Midwest Roadside
Safety Facility**

**NCHRP 22-14(2)
Temporary Barrier
with Quad-cab Pickup
Bill of Bars**

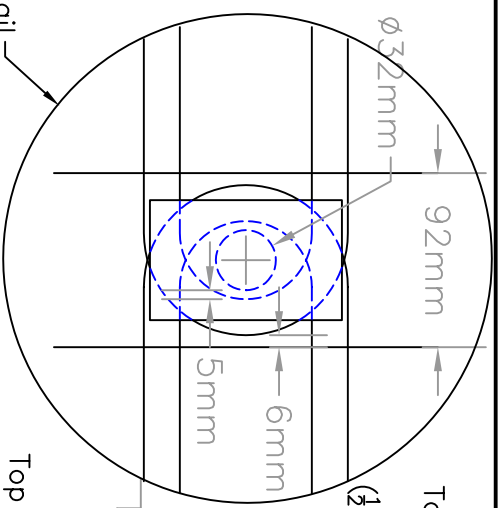
Drawing Name:
2214TB-2 R2.dwg

Scale:
1=16

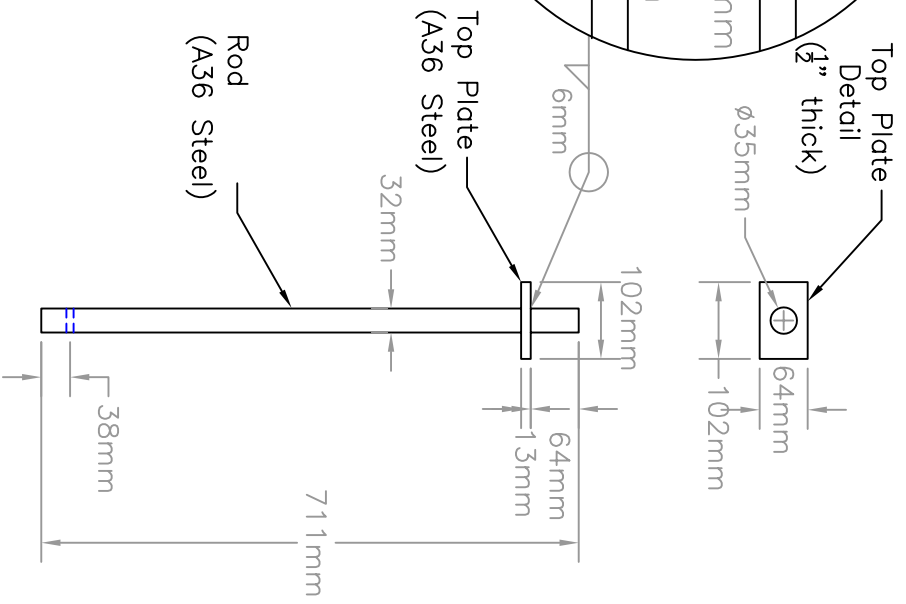
Sheet:
4 of 5
Date:
10/17/2005
By:
GEP
Rev:
KAP



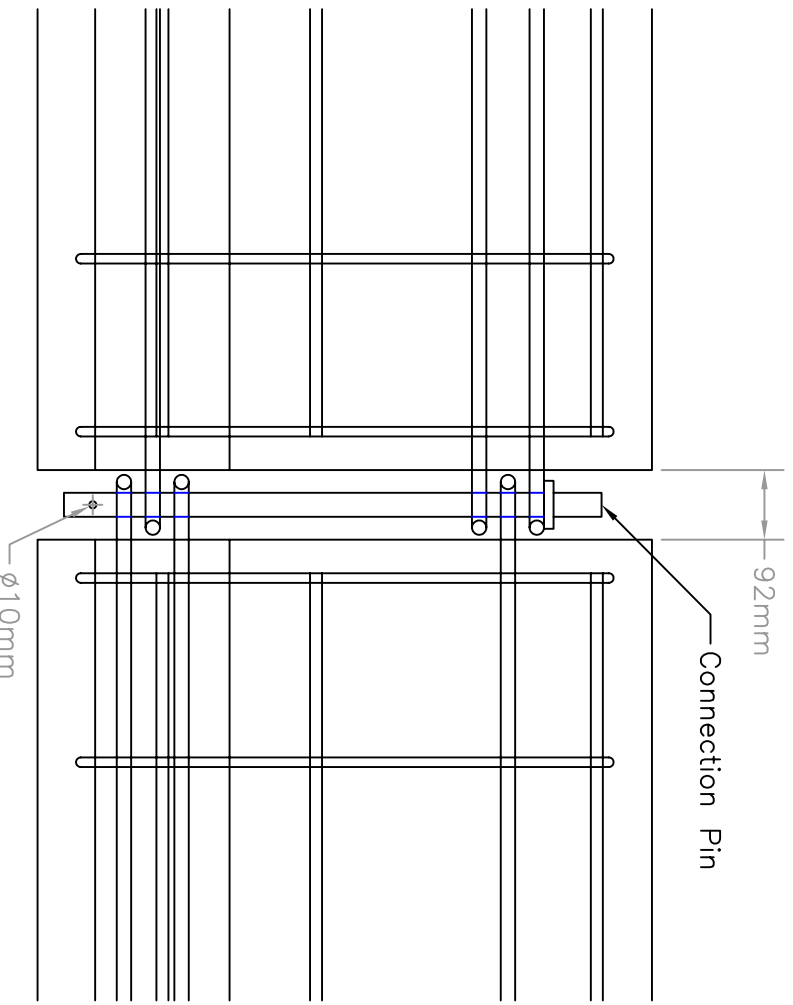
Plan View



Top Plate Detail (1/2" thick)

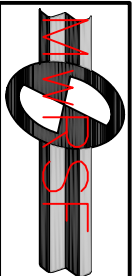


Connection Pin



Barrier Connection Detail

Note: Remove slack from joint after pin installation



Midwest Roadside Safety Facility

NCHRP 22-14(2) Temporary Barrier with Quad-cab Pickup Barrier Details

Sheet: 5 of 5	By: GEP
Date: 10/17/2005	Rev: KAP
Drawing Name: 2214TB-2 R2.dwg	Scale: 1=10