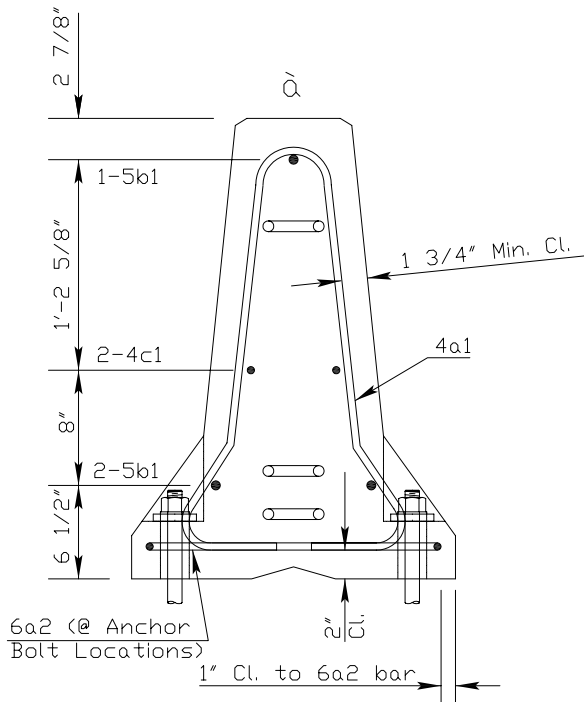
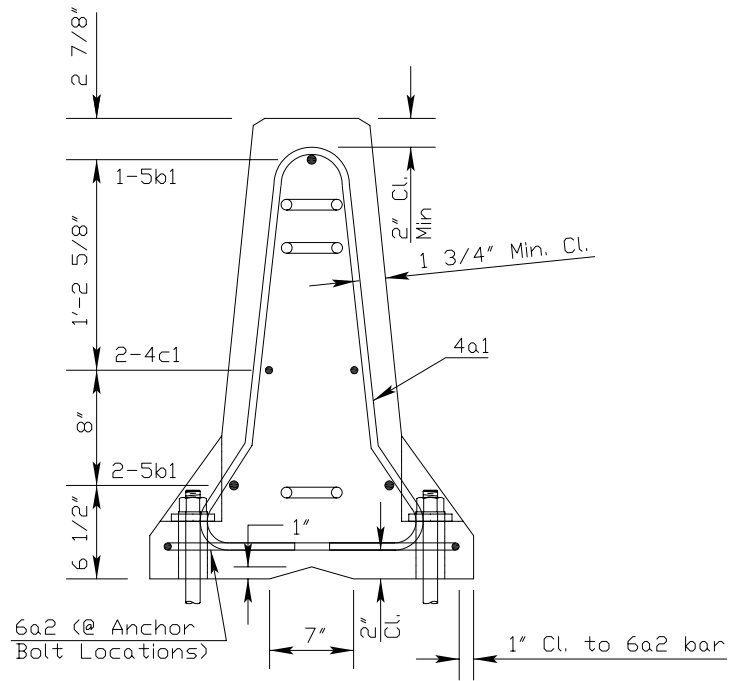


END VIEW



SECTION A-A
TYPICAL SECTION

(Stirrup Placement)

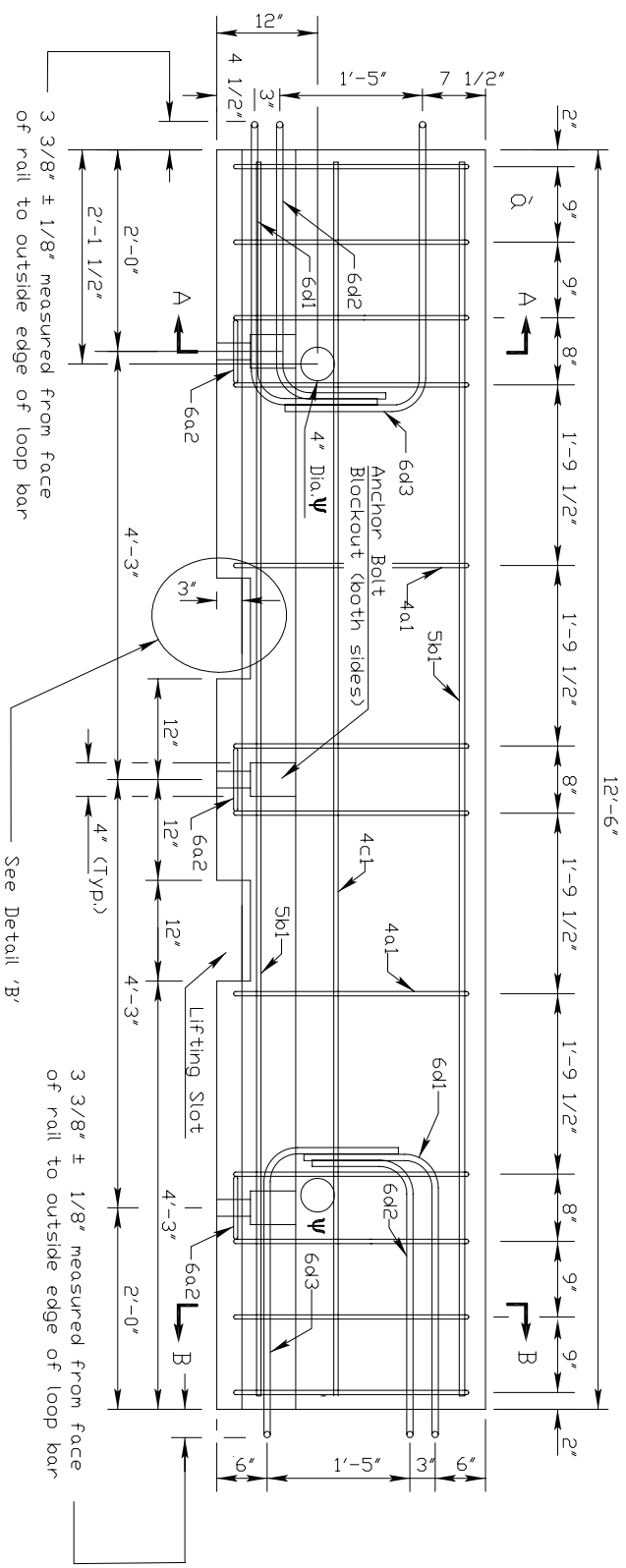


SECTION B-B
TYPICAL SECTION

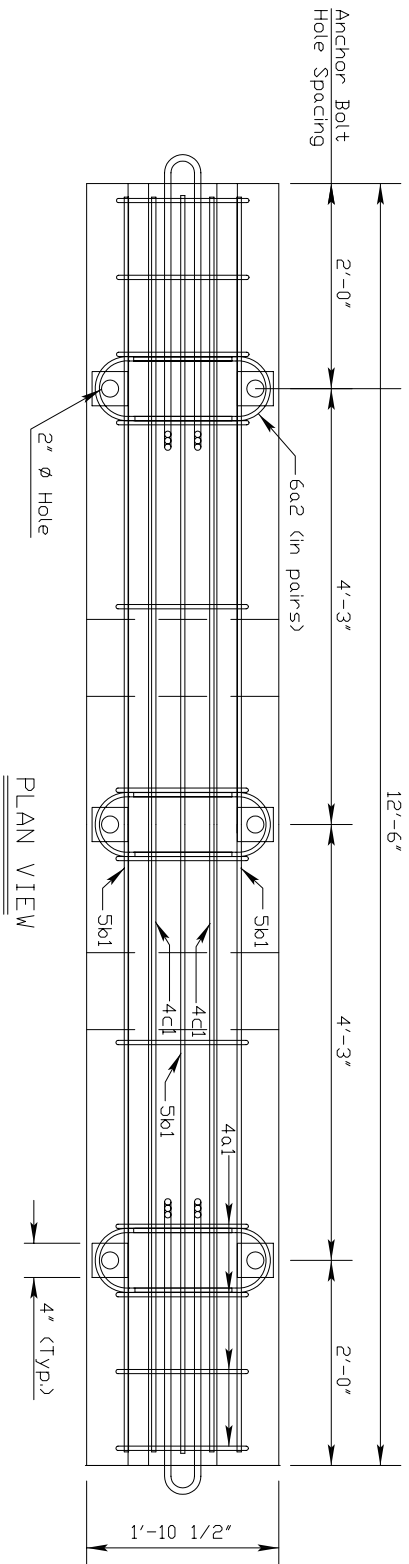
(Stirrup Placement)

Note: \hat{a} - Marked End

- See table for rebar definitions
- Dimensions are out to out of bars unless otherwise noted.



ELEVATION VIEW

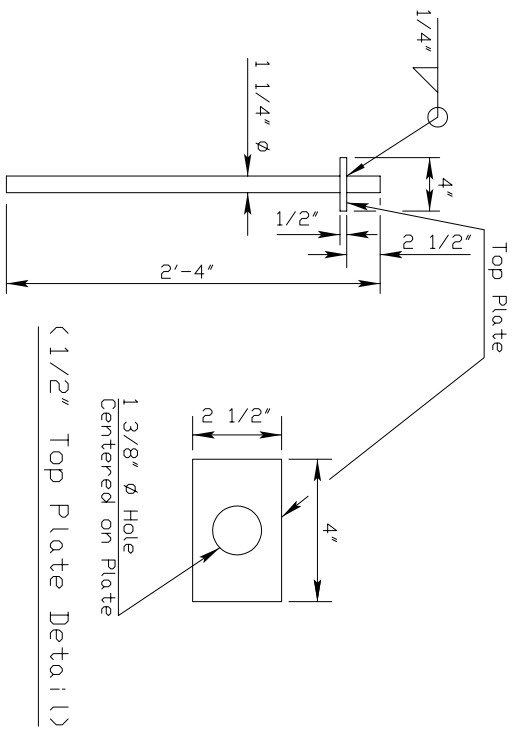
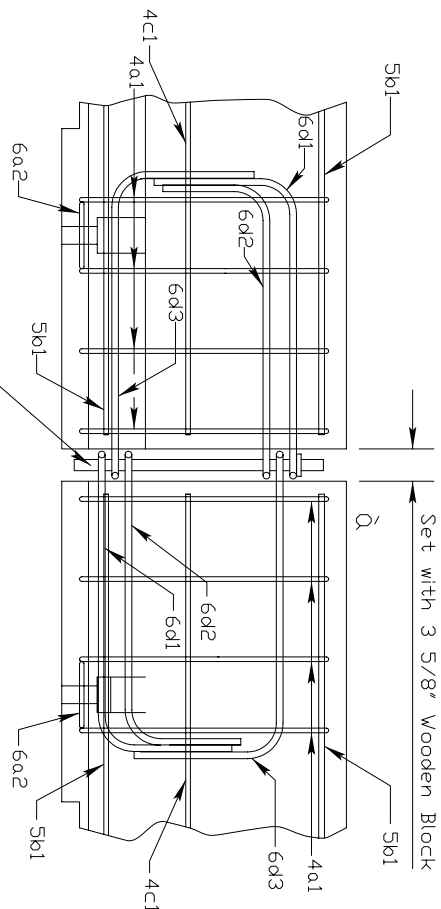


Note: \hat{Q} - Marked End

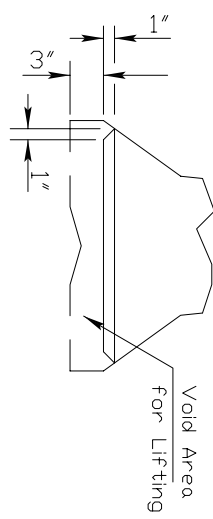
- See table for rebar definitions
- Dimensions are out to out of bars unless otherwise noted.
- Ψ - 4" diameter - 11 gauge steel round mechanical tubing sleeve. These holes are optional.

For connection pin details see Detail "A"

DETAILS OF BARRIER CONNECTION

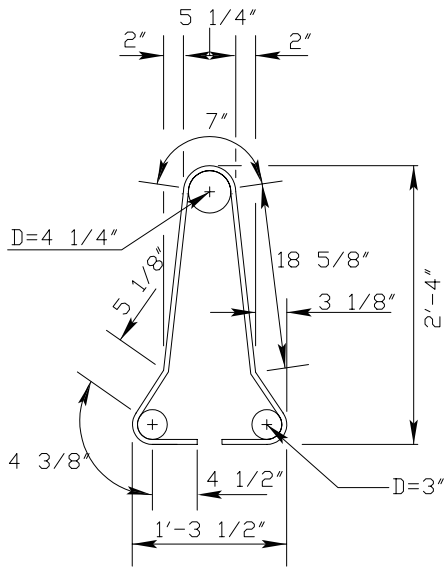


DETAIL A
CONNECTION PIN
(A36 Steel)
10, 9 lbs. each



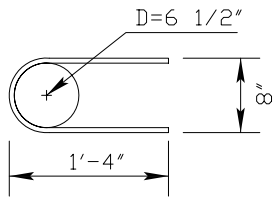
DETAIL 'B'
LIFTING SLOT DETAIL
(1" Chamfer to prevent spalling)

- Note: Q - Marked End
- See table for rebar definitions
 - Dimensions are out to out of bars unless otherwise noted.

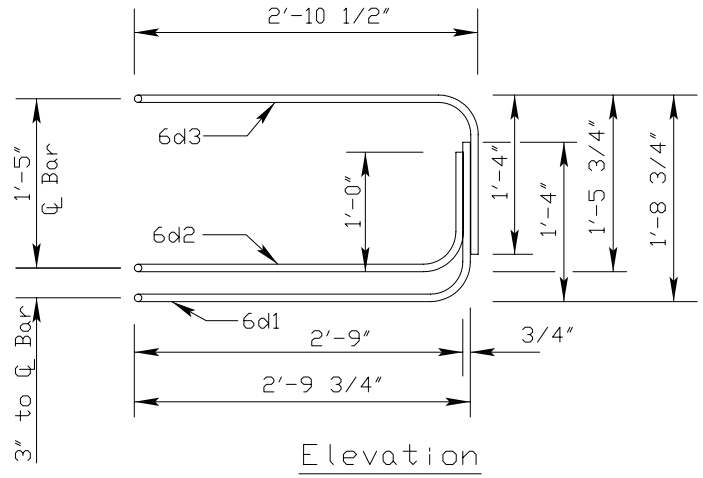


4a1

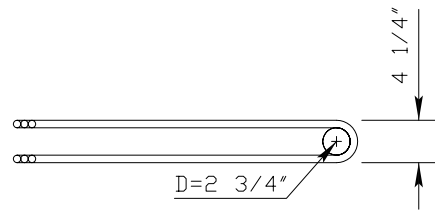
Vertical
Stirrups



6a2



Elevation



Plan

LOOP BAR ASSEMBLY

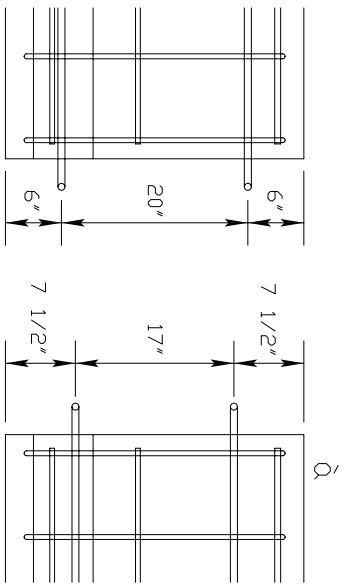
(Marked end shown, invert for other end)
(A706 Steel)

Dimensions are out to out of
bars unless otherwise noted.

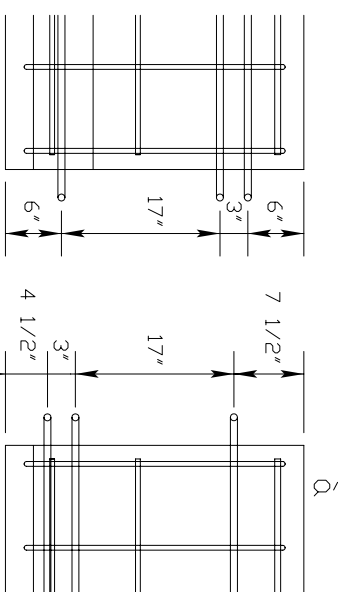
Per 12'-6" Barrier Section

REINFORCING A615 Gr. 60					
Bar	Bar Size	Shape	No. of Bars	Length Ft.	Weight Lbs.
4a1	4		12	6'-0"	48.1
6a2	6		6	2'-11"	26.3
5b1	5		3	12'-2"	38.1
4c1	4		2	12'-2"	16.3
LOOP ASSEMBLY A706 Gr. 60					
6d1	6		2	8'-5"	25.3
6d2	6		2	7'-7"	22.8
6d3	6		2	8'-6"	25.5

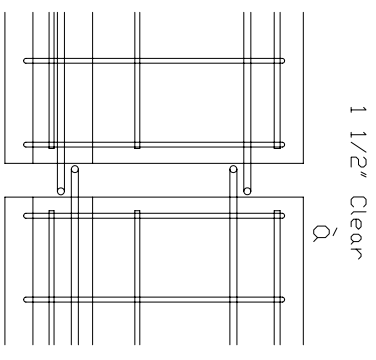
Concrete Quantity = 1.3 C.Y.



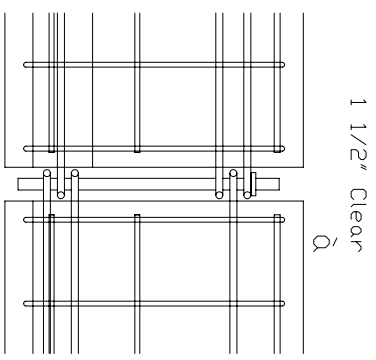
IDWA
BARRIER CONNECTION



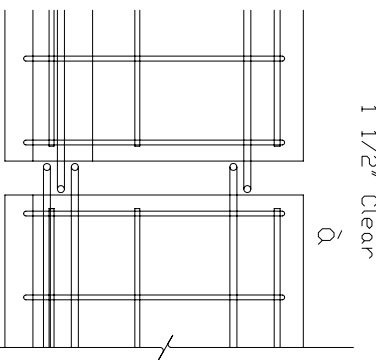
KANSAS
BARRIER CONNECTION



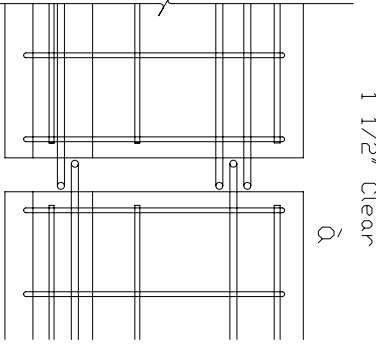
IDWA
BARRIER CONNECTION



KANSAS
BARRIER CONNECTION



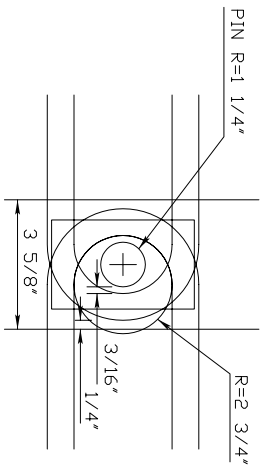
IDWA
BARRIER CONNECTION



IDWA
BARRIER CONNECTION

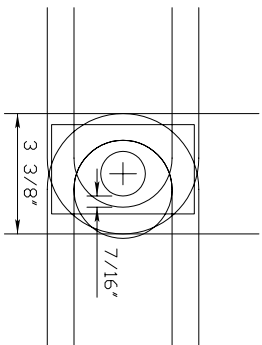
TYPE V TEMPORARY BARRIER
(End Connections - Kansas to Iowa)

Q - Marked End (Left side of sketch)

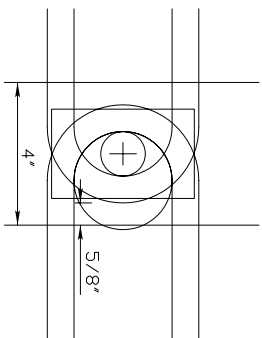


3 5/8" Block-Set Gap

3 3/8" on Loop Bar Projection

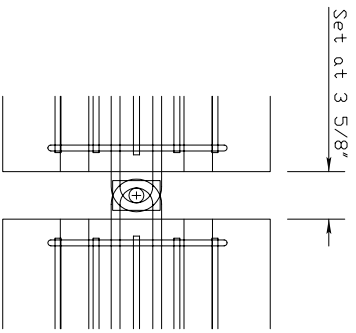


3 3/8" Minimum Opening

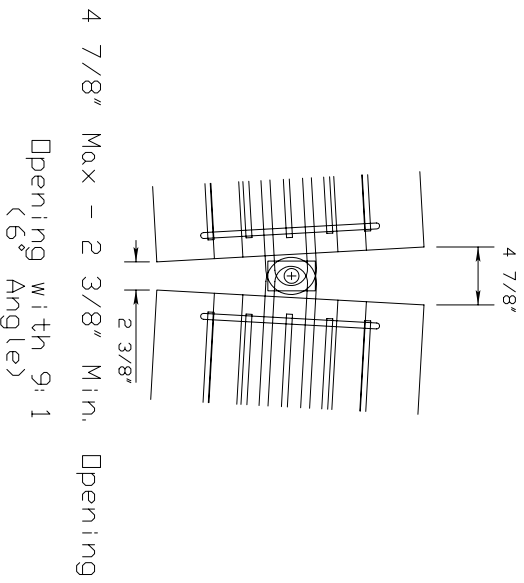


4" Maximum Opening

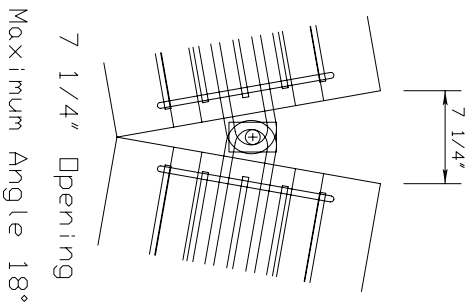
TEMPORARY TYPE V BARRIER
MINIMUM AND MAXIMUM DISTANCES



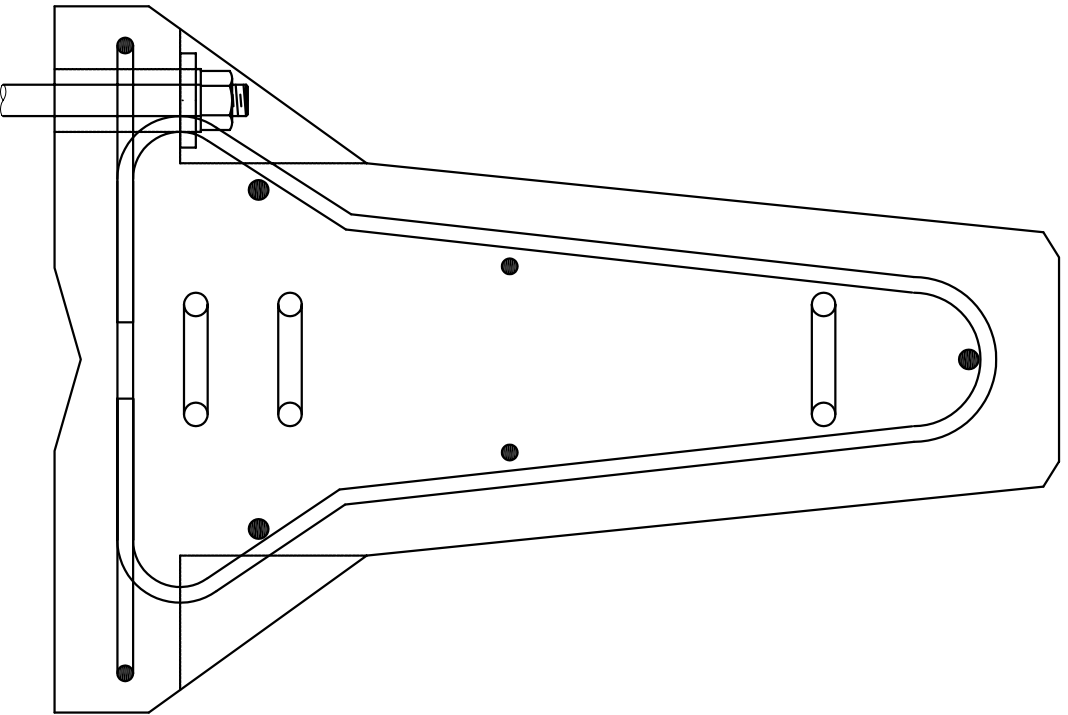
4" Maximum Opening
3 3/8" Minimum Opening



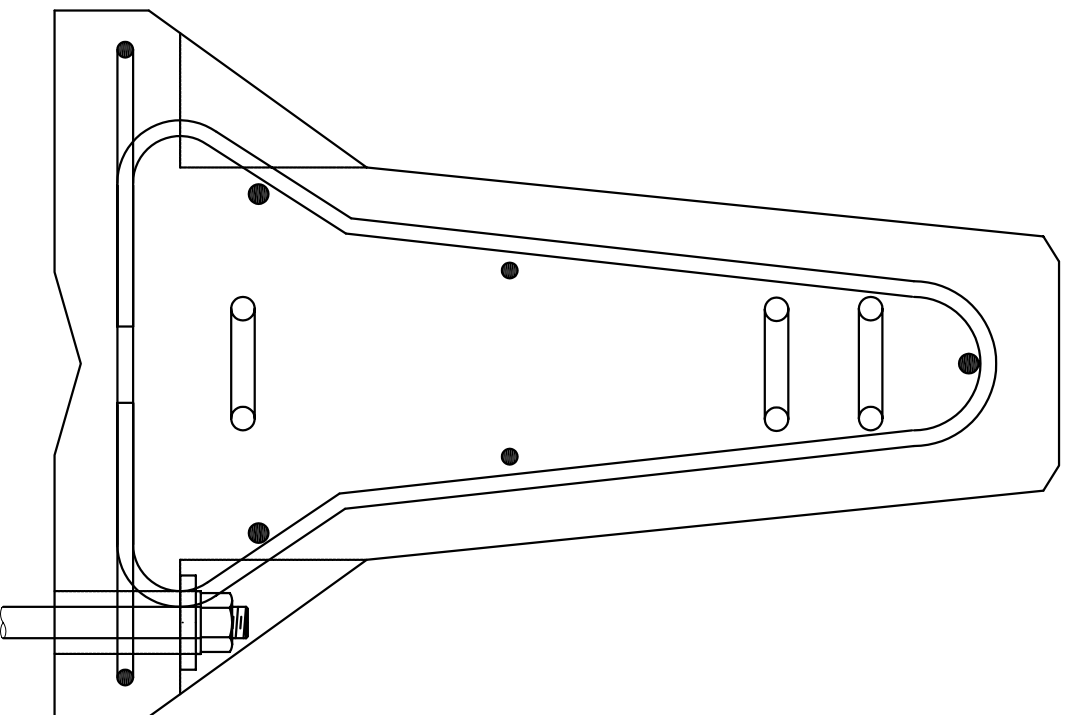
4 7/8" Max - 2 3/8" Min. Opening
(Opening with 9:1
6° Angle)



7 1/4" Opening
Maximum Angle 18°



SECTION A-A
(TYPICAL)



SECTION B-B
(TYPICAL)