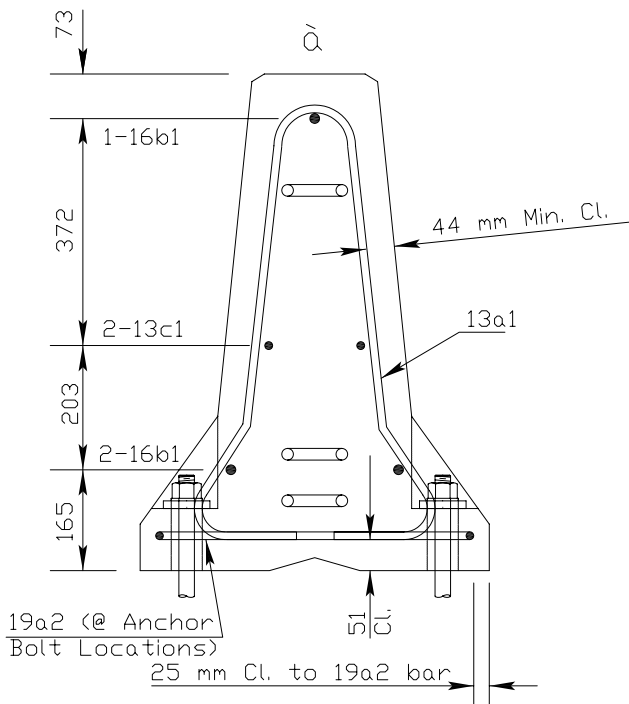
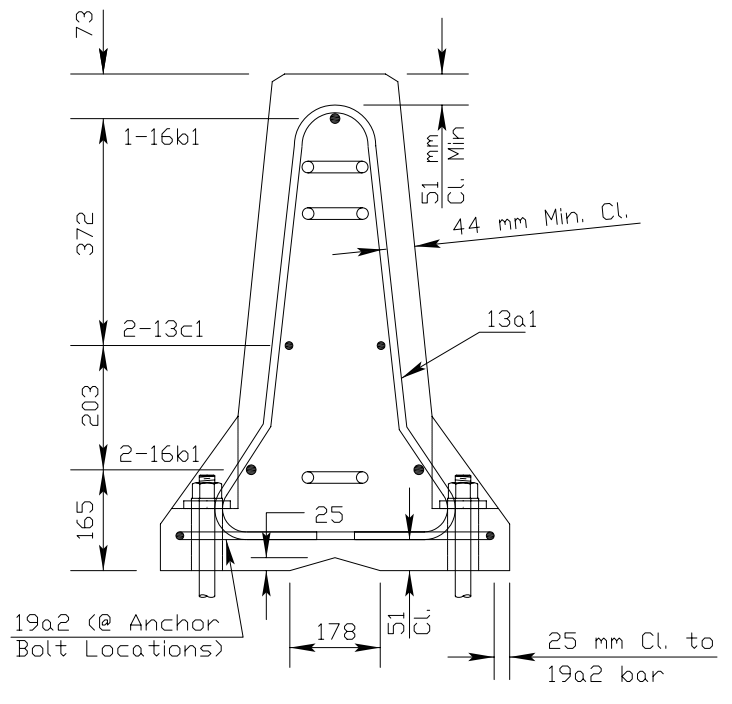


END VIEW



SECTION A-A  
TYPICAL SECTION

(Stirrup Placement)



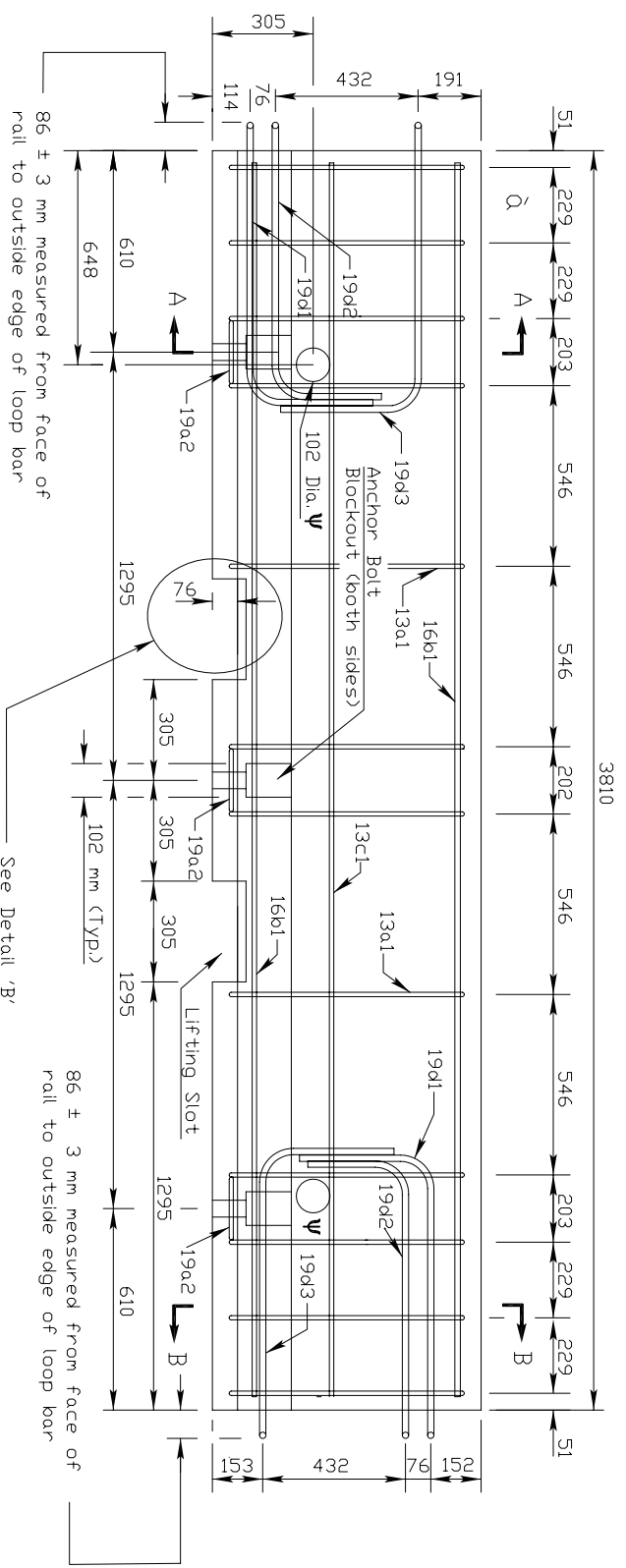
SECTION B-B  
TYPICAL SECTION

(Stirrup Placement)

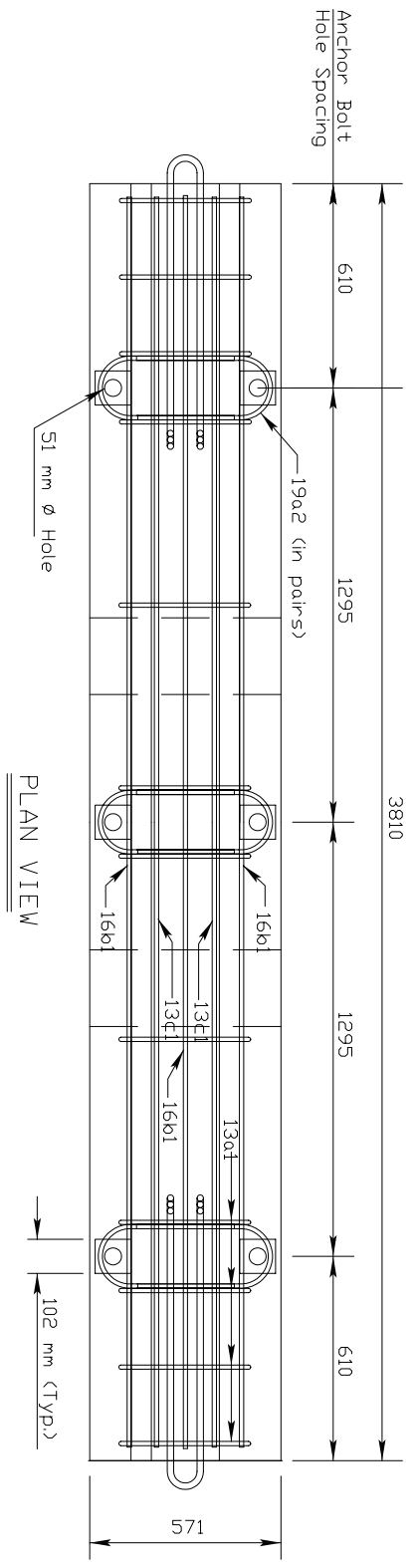
Note:  $\hat{a}$  - Marked End

- See table for rebar definitions

- Dimensions are out to out of bars unless otherwise noted.



ELEVATION VIEW

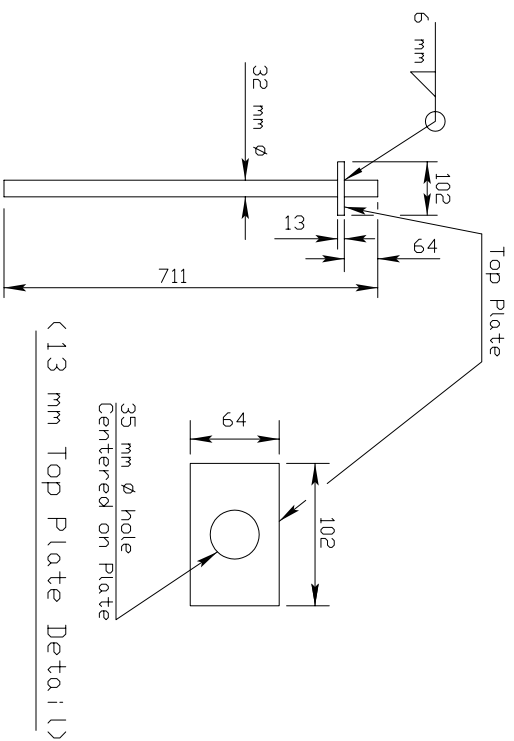
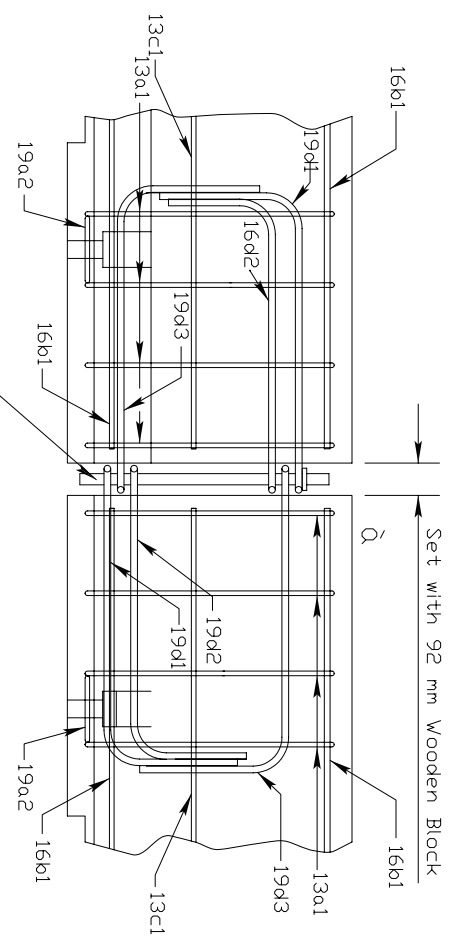


Note:  $\varnothing$  - Marked End

- See table for rebar definitions
- Dimensions are out to out of bars unless otherwise noted.
- $\Psi$  - 102 mm diameter - 3 mm thick steel round mechanical tubing sleeve. These holes are optional.

For connection pin details see Detail "A"

DETAILS OF BARRIER CONNECTION

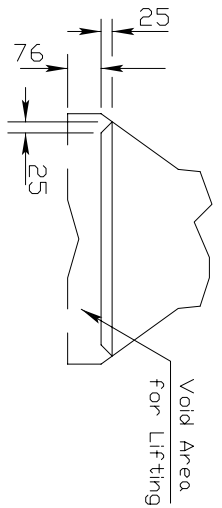


DETAIL A  
CONNECTION PIN

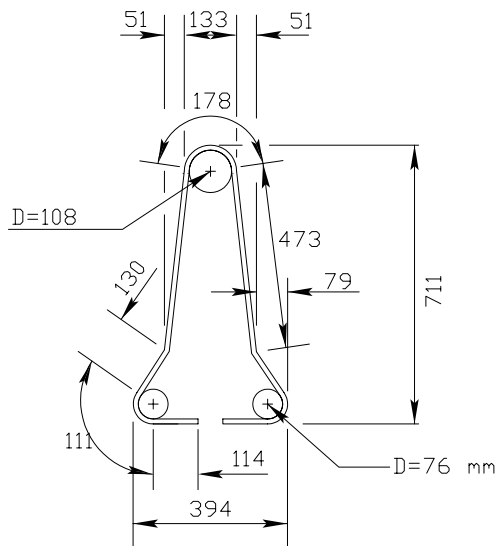
(A36 Steel)  
4.9 kg each

DETAIL 'B'  
LIFTING SLOT DETAIL

(25 mm Chamfer to prevent spalling)

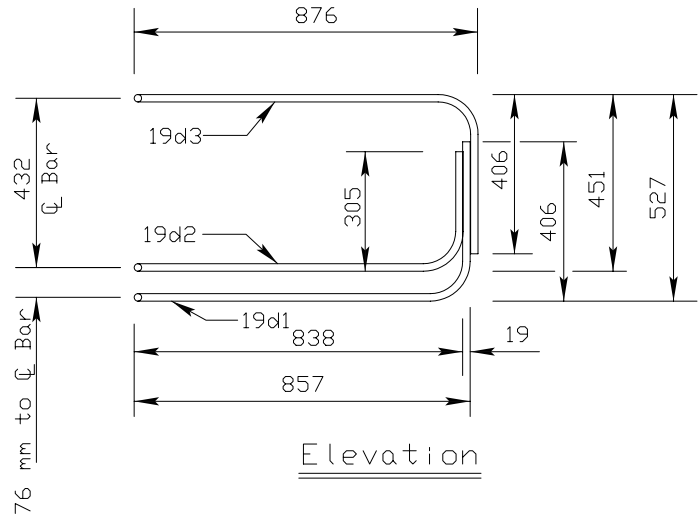


- Note: Δ - Marked End
- See table for rebar definitions
  - Dimensions are out to out of bars unless otherwise noted.

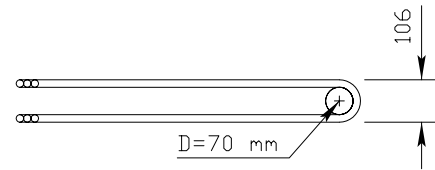


13a1

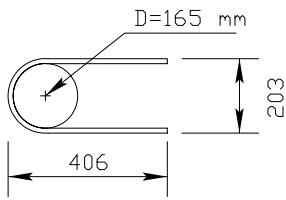
Vertical Stirrups



Elevation



Plan



19a2

LOOP BAR ASSEMBLY

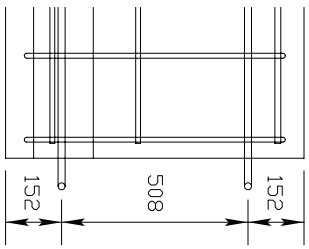
(Marked end shown, invert for other end)  
(A706 Steel)

Dimensions are out to out of bars unless otherwise noted.

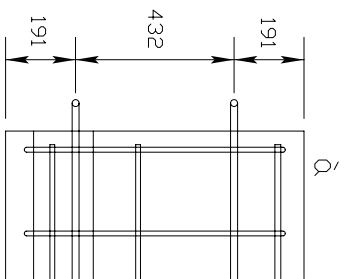
Per 3810 mm Barrier Section

REINFORCING A615 Gr. 60					
Bar	Bar Size	Shape	No. of Bars	Length mm	Weight kg
13a1	13		12	1834	21.9
19a2	19		6	898	12.0
16b1	16		3	3708	17.3
13c1	13		2	3708	7.4
LOOP ASSEMBLY A706 Gr. 60					
19d1	19		2	2565	11.5
19d2	19		2	2311	10.3
19d3	19		2	2591	11.6

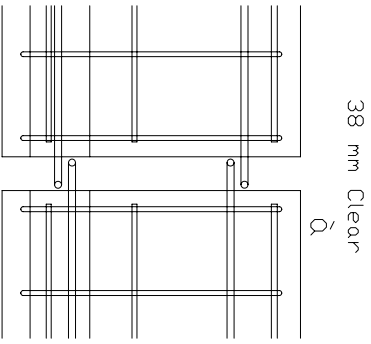
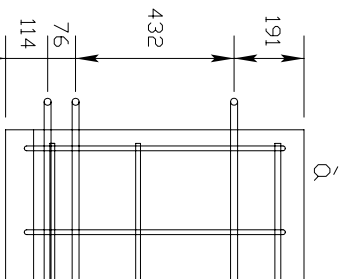
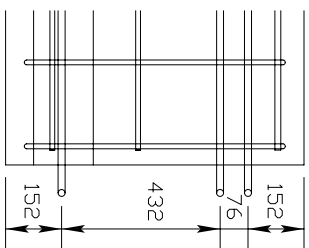
Concrete Quantity = 1.0 cubic meters



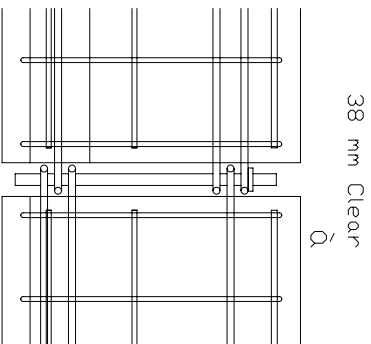
IOWA  
BARRIER CONNECTION



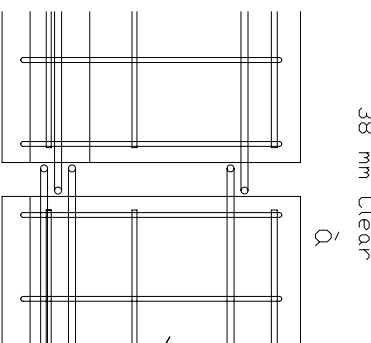
KANSAS  
BARRIER CONNECTION



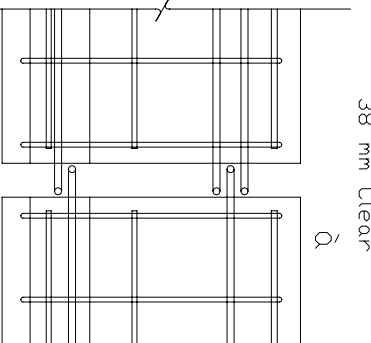
IOWA  
BARRIER CONNECTION



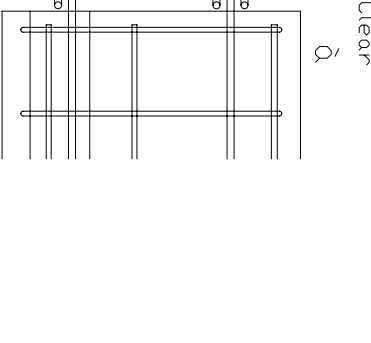
KANSAS  
BARRIER CONNECTION



IOWA



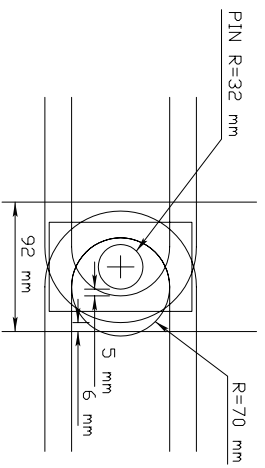
KANSAS



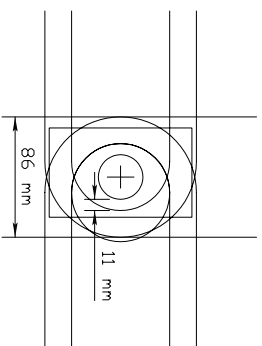
IOWA

TYPE V TEMPORARY BARRIER  
(End Connections - Kansas to Iowa)

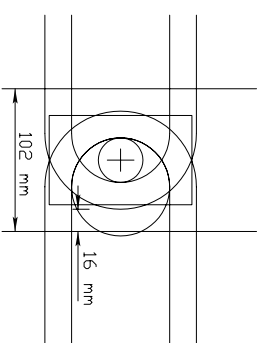
Q - Marked End (Left side of sketch)



92 mm Block-Set Gap  
86 mm on Loop Bar Projection

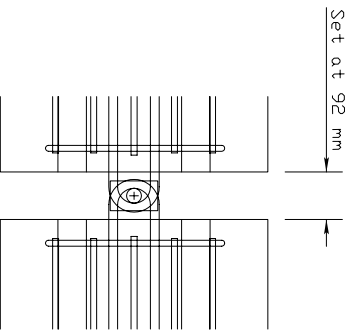


86 mm Minimum Opening

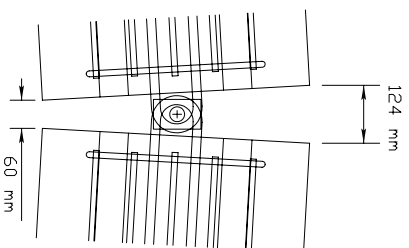


102 mm Maximum Opening

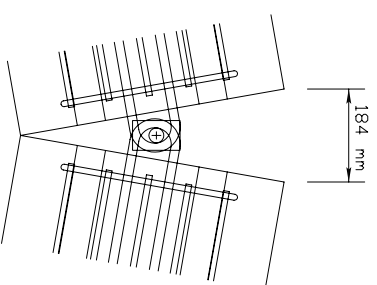
### TEMPORARY TYPE V BARRIER MINIMUM AND MAXIMUM DISTANCES



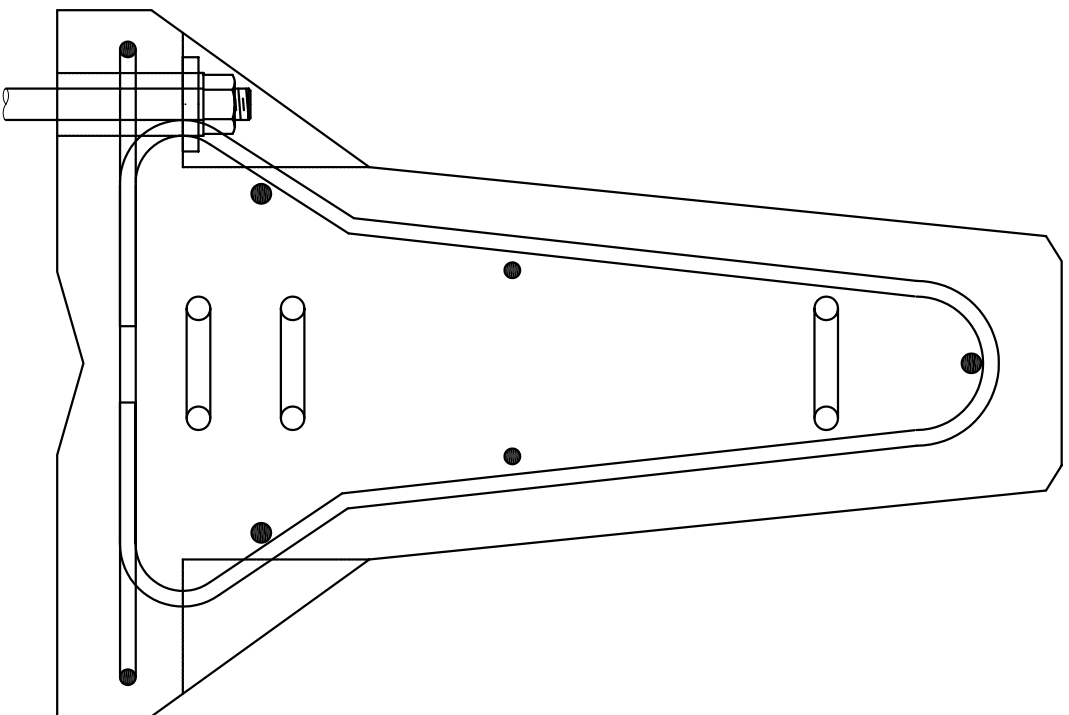
102 mm Maximum Opening  
86 mm Minimum Opening



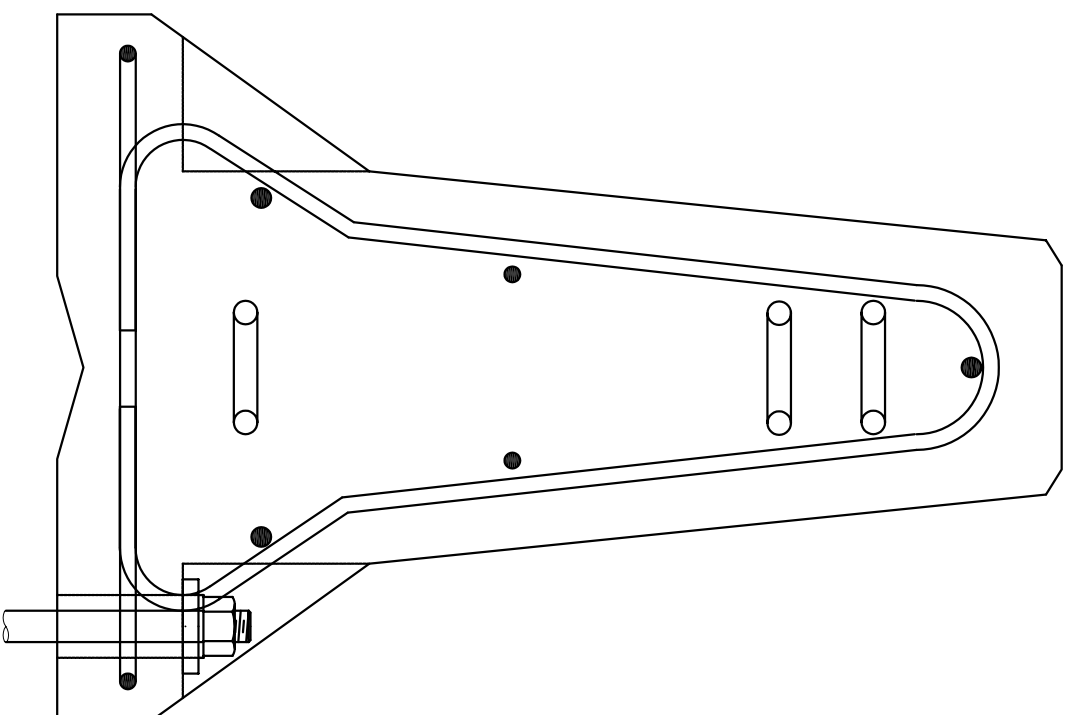
124 mm Max - 60 mm Min. Opening  
Opening with 9:1  
(6° Angle)



184 mm Opening  
Maximum Angle 18°



SECTION A-A  
(TYPICAL)



SECTION B-B  
(TYPICAL)