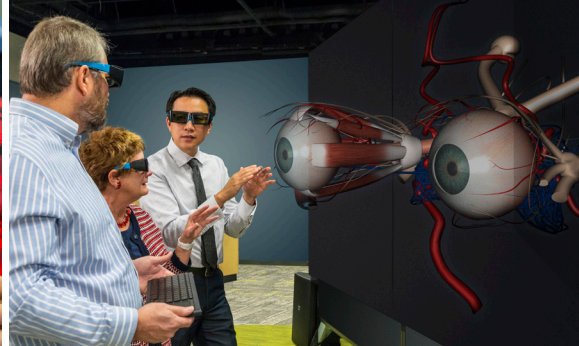


iEXCELSM Program

in the Global Center for Advanced Interprofessional Learning

*Global leadership in transforming human performance
and effectiveness in health care*



What is iEXCELSM?

The Interprofessional Experiential Center for Enduring Learning (iEXCELSM) will distinguish Nebraska by creating a new transformative model for health care education, training and research. This model will be built around, and incorporate, a wide range of simulation technology so health care professionals can learn and become proficient in taking care of patients in safe, simulated settings.

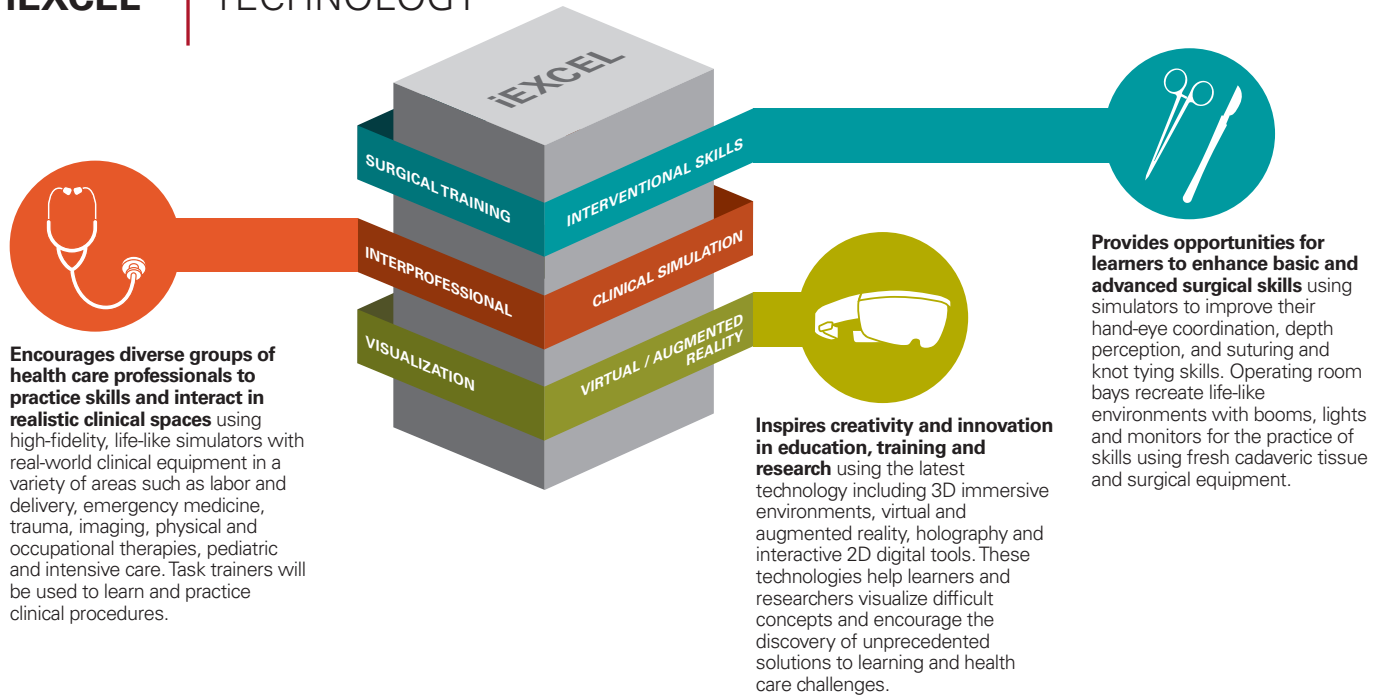
The goals are to:

- Improve patient outcomes (reduce medical errors and avoidable deaths)
- Replace an outmoded educational model that is underserving a generation of new digital learners
- Address health care provider shortages through specialized and advanced training
- Stimulate unique workforce and economic development
- Drive innovation, commercialization and tech transfer

The new Dr. Edwin Davis & Dorothy Balbach Davis Global Center for Advanced Interprofessional Learning (Davis Global Center) will serve as the headquarters for iEXCEL. This multi-level, 191,884 gross-square-foot clinical simulation facility will open in fall 2018 on the University of Nebraska Medical Center campus in Omaha, Neb. The National Center for Health Security and Biopreparedness will occupy the ground level, and benefit from the simulation and visualization resources throughout the building.

Housing a wide range of simulation and visualization technologies, the Davis Global Center will form the hub for a statewide network of interconnected simulation centers for the professional development of health care providers. These conjoined centers will promote experiential training opportunities as well as incite unique research endeavors that are made possible by advanced modeling, simulation and visualization technologies. Collectively, these technologies will accelerate the development of advanced training for individuals and interdisciplinary teams, at all levels of training and re-training, so that participants develop and are properly assessed on proficiencies while learning how to work in highly effective teams.

iEXCELSM TECHNOLOGY



iEXCEL and the Davis Global Center will:

- Contribute to workforce and economic development, creating up to 325 well-paying jobs and generating a projected \$39.3M annually in economic impact for Nebraska.
- Offer specialized training opportunities in simulation technology, 3D and Virtual/Augmented Reality (AR/VR) content development.
- Collaborate with industry and the community to provide new opportunities for learners.
- Result in new and relevant learning methods, including 3D/VR/AR content, clinical and surgical training modules, research and development opportunities, and interactive e-learning.
- Develop and enhance health care processes in partnership with Nebraska Medicine to benefit health care professionals and ultimately improve patient outcomes.
- Ensure proficiency in training, education and practice, meeting the needs of learners of all levels of training. iEXCEL will serve as a global resource for improving health care by enhancing human performance.



Architectural rendering